



Tractors

**AXOS**

**3.120 | 3.110 | 3.105 | 3.95**





**Challenge accepted.**  
No matter what comes next:  
we're ready with tractors  
from CLAAS.

Every day, we face new challenges on our farm. Whatever the task, CLAAS tractors are the perfect partner to tackle them. We can achieve better results in a shorter time. We can complete exacting tasks with ease and in comfort. Operator assistance systems enable us to be the best drivers we can be. In short: our CLAAS tractors are always ready when we are.

[tractors.claas.com](https://tractors.claas.com)



A tractor that's as  
flexible as I am?  
Challenge accepted.  
With the new AXOS 3.

Discover more at:  
[axos3.claas.com](https://axos3.claas.com)

There's something special about a family farm. It is often home to several generations working side by side. Here, qualities like power and versatility, comfort, user friendliness and reliability count. The necessary level of flexibility is a given with new AXOS 3 from CLAAS.



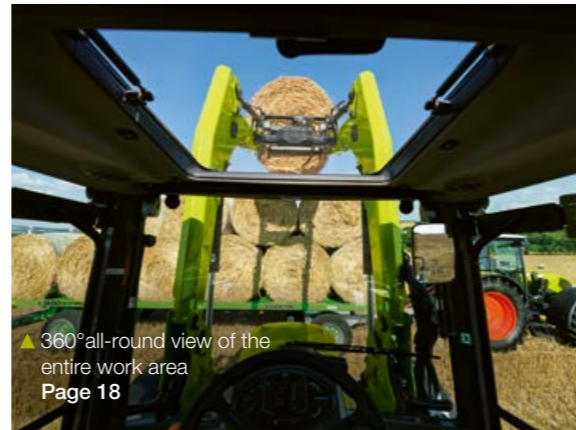
▲ Overall height from 2.5 m for easy access to old buildings  
Page 10



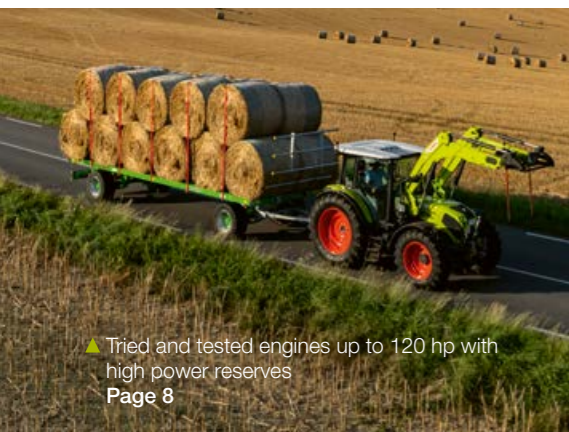
▲ Electric parking lock for more comfort  
Page 19



▲ 180° door-opening angle for easy access to the cab  
Page 16



▲ 360° all-round view of the entire work area  
Page 18



▲ Tried and tested engines up to 120 hp with high power reserves  
Page 8



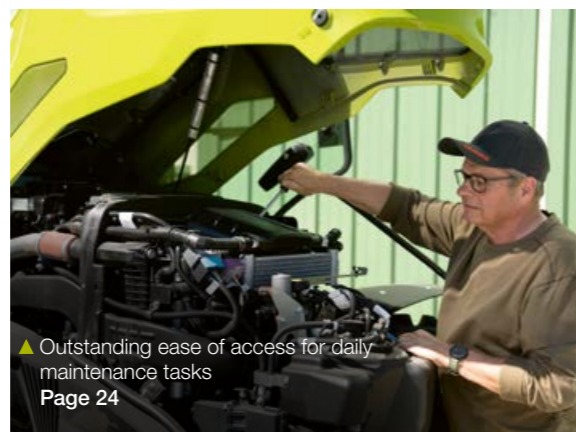
▼ 5.3 t max. lift capacity at the rear for heavy implements  
Page 12



▲ Electronic E-PILOT S control system for efficient front loader work  
Page 14



▼ Up to 90 l/min hydraulic output for more bales per day  
Page 12



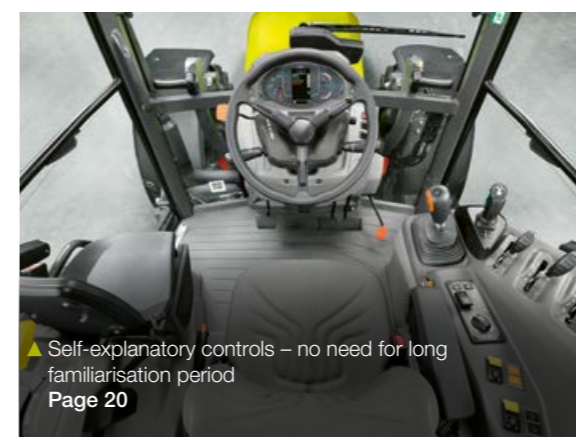
▲ Outstanding ease of access for daily maintenance tasks  
Page 24



▲ 600-h maintenance interval for less downtime  
Page 24



▲ SMART STOP for convenient stopping and starting  
Page 22



▲ Self-explanatory controls – no need for long familiarisation period  
Page 20

**Power and versatility.**

One tractor for everything: the AXOS 3 is the ideal partner for yard, field and road. With its powerful engine, low overall height and cleverly designed CLAAS front loader, it can take on any challenge.

**Comfortable to drive.**

The AXOS 3 offers an excellent all-round view, a low overall height and front-hinged doors with a 180° opening angle. And it is the only compact tractor in its hp class to be equipped with an electronic parking lock.

**Easy to operate.**

Smart operator assistance systems and the self-explanatory CLAAS control concept make the AXOS 3 incredibly user-friendly. Dynamic steering, SMART STOP and E-PILOT S ensure efficient work, whatever the task.

**Reliable all year round.**

Long maintenance intervals, rapid service, speedy parts delivery and MAXI CARE all-round protection: farmers appreciate not just the reliability of the AXOS 3, but its ease of maintenance too.

**Contents**

**Power and versatility**

Engine and transmission	8
Construction and payload	10
Rear linkage, hydraulics and PTO	12
Front linkage and front loader	14

**Comfort**

Cab and doors	16
LED work lights, parking lock and transparent sunroof	18

**User-friendliness**

Control panel and dashboard	20
SMART STOP, E-PILOT S, dynamic steering and automatic PTO	22

**Reliability**

Maintenance and service	24
Technical data	26

# Get everything done with maximum efficiency.

The impressive power and versatility of the AXOS 3 makes it the perfect tractor for the diverse needs of a family farm. Compact, manoeuvrable and well-powered, this genuine all-rounder reveals its full potential during both field and yard work. Strong in the field and compact in the shed, it offers enough power for all your day-to-day tasks. And what's more, it's as comfortable to drive and as easy to shift as a car.

REVERSHIFT clutchless reverser for more agility at the headland. TWINSHIFT powershift for more tractive power at the press of a button.

### Power where it matters.

The AXOS 3 is equipped with a powerful 4-cylinder engine with 3.6 l displacement. The smooth ride is pleasantly noticeable in the cab. With an output of up to 120 hp, the tractor is well-equipped for heavy work. The tried and test turbo engines have ample power reserves. They have proved particularly popular in other CLAAS compact tractors because of their responsiveness and low fuel consumption.

### Sustainability, because it matters.

The AXOS 3 is HVO-compatible, so you can go ahead and fill the tank with HVO synthetic diesel fuel. Consumption is the same as for fossil diesel. But pollutant and CO<sub>2</sub> emissions are lower because HVO is free from sulphur compounds and aromatic hydrocarbons.

### Smooth car-like gear shifting.

The powerful gearbox in the AXOS 3 is well-stepped. It has 24 forward and 12 reverse gears, 11 of which are in the main operating range between 5 and 15 km/h. Intuitive shifting makes for a relaxed driving experience right from the start.

On the field, the REVERSHIFT clutchless reverser on the steering wheel ensures gentle turning manoeuvres and more agility at the headland. And with TWINSHIFT powershift, you can increase the tractive power at the press of a button.

On the road, you can shift gear effortlessly using a button on the gear knob which engages the clutch for you. The AXOS 3 achieves its top speed of 40 km/h at 1,750 rpm, saving fuel and reducing noise.

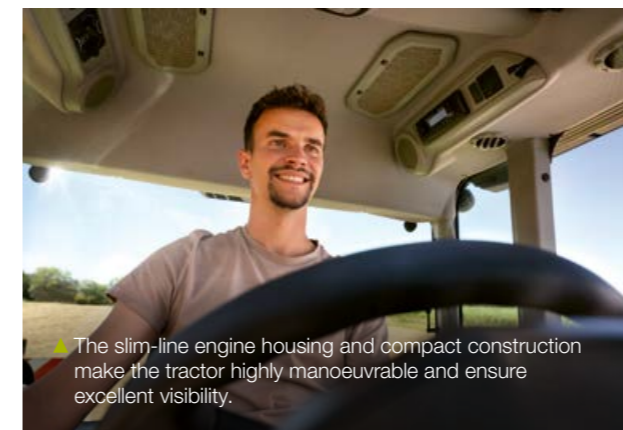


"Field, road, yard, shed – the AXOS 3 goes anywhere."

Laura

#### ▲ High power. Low fuel consumption.

- Powerful 4-cylinder engines with 3.6 l displacement
- Fuel-efficient despite high power reserves
- 160 l fuel and 10 l urea for long working days
- Approved for combusting synthetic HVO diesel fuel
- Well-stepped gearbox with REVERSHIFT and TWINSHIFT



▲ The slim-line engine housing and compact construction make the tractor highly manoeuvrable and ensure excellent visibility.



"REVERSHIFT and TWINSHIFT save me time in the field."

Antonin



▼ The AXOS 3 achieves its top speed of 40 km/h at a fuel-saving, low-noise 1,750 rpm.

# Strong in the field, compact in the shed.



- Flexible by design.**
- Overall height from 2.5 m ideal for low buildings
  - Optimal weight distribution for stability in the field and on the road
  - Large 38" wheel diameter for soil protection
  - Generous ground clearance for forage harvesting and crop spraying

From 2.5 metres high and ready for anything. Thanks to its low overall height, the AXOS 3 can navigate even older farm buildings. The tractor's compact construction means that you don't have to make costly modifications to your existing buildings – instead, the AXOS 3 adapts to the conditions on your farm. This flexibility is a huge bonus.



"The doorways are often very low on family farms with traditional buildings or poultry sheds. But that doesn't stop the AXOS 3."

Laura



**Soil-friendly and efficient draught work.**  
When it comes to soil protection and draught work with larger implements, the 38" rear tyres on the AXOS 3 offer an outstanding solution. With larger diameter wheels, there are more ribs to grip the soil and the weight of the tractors is spread over a larger area. This reduces fuel consumption and protects the soil, which in turn leads to higher yields at harvest time.



**Compact design.**

Thanks to its low centre of gravity, long wheelbase and optimal weight distribution, you'll find the AXOS 3 particularly safe and efficient, no matter whether it is loaded at the front or the rear. It has little need of extra ballast as the four wheels transfer power to the ground optimally.

Whether you're doing front loader work in the yard, draught work in the field with heavy front and rear implements, or transport runs on the road, you'll always feel safe and secure in the AXOS 3.

**High payload.**

The high payload of 3,600 kg enables you to use a variety of implement combinations, including heavier and wider implements. Yet with reduced tyre pressure, you'll always go easy on the soil – for example, with 540/65 R 38 tyres at the rear and 440/65 R 28 tyres at the front.

The generous ground clearance makes it easy to drive over swaths or work in crops at an advanced stage of growth during forage harvesting and crop spraying.

# Find out what it's made of.

You can pile the work on your AXOS 3. With maximum 5.3 t lift capacity at the rear and a hydraulic output of 90 l/min, it is ideally equipped to take on your challenges. You can adjust the hydraulic circuit and spool valves precisely to your needs. Perfect when you have to perform several actions simultaneously or operate implement combinations with very high hydraulic requirements.

The ball holder at the rear has room for up to six rear linkage balls. So you'll never again waste time looking for them.

## Maximum lift capacity for larger implements.

The AXOS 3 comes with electronic rear linkage control as standard, ensuring easy handling and precise control for every task and any operator.

With a maximum lift capacity of 5.3 t, it can effortlessly handle heavy implements. A ball holder at the rear provides safe storage for up to six rear linkage balls, so they are always to hand.

## Powerful hydraulic circuit.

More work, less fuel. With a flow rate of 60 or 90 l/min and up to four mechanical spool valves, the hydraulic circuits of the AXOS 3 are ideal for working quickly and efficiently even with larger hydraulic consumers. You can increase the flow rate at the press of the button, so you always have exactly the power you need.

## Safe and easy operation.

Another plus point when it comes to operating comfort is the well-designed, ergonomic configuration of the rear linkage and rear hydraulic couplers. Colour-coded control elements and external controls for the rear linkage on each mudguard make for safe and easy connections. So you can attach and remove any implement in next to no time with minimum effort.

## Powerful rear PTO.

The AXOS 3 offers three different rear PTO speeds, including a 540 ECO PTO with reduced engine speed. This option reduces diesel consumption and minimises noise levels during light PTO work. The rear PTO can also be conveniently controlled via a button on the rear mudguards.



▲ The high lift capacity at the rear enables you to use heavy implements or implement combinations.

## Do more, consume less.

With a flow rate of 90 l/min, you can work faster by performing overlapping actions simultaneously. When you no longer require maximum power, the tractor can work at a reduced engine speed – saving fuel and reducing noise levels in the cab.



# High hydraulic output means more bales per day.

▲ "The external controls on the mudguards for the rear linkage and PTO is really very practical. I have never connected and disconnected this fast before."

Bernard



▲ **More flexibility for your implements.**

- Work faster with the powerful hydraulic circuit
- Increase the flow rate at the press of a button
- Lift even heavy implements with the rear linkage
- Store rear linkage balls in the handy holder at the rear



▲ **Versatility is its strength.**

- CLAAS front loader with hydraulic or mechanical self-levelling linkage
- Fingertip control with E-PILOT S
- Front linkage with a lift capacity of 3.2 t
- Versatile front PTO with 1,000 rpm



◀ With its impressively powerful performance, innovative functions and diverse application and mounting options, the AXOS 3 is the ideal partner for family farms.

▼ The high hydraulic output enables you to work at a low engine speed. This combination not only saves fuel; it gets the work done faster and keeps noise down to a pleasantly low level in the cab.

**Fingertip control with E-PILOT S.**  
The electronic E-PILOT S 4-way control lever is ideal for intensive front loader work thanks to its simple, intuitive operation. The implement responds to your signals with speed and precision.

Alternatively, you can opt for the PROPILLOT, the conventional control system that operates with Bowden cables. Both options are integrated into the side console and within easy reach.



# Muscle power and fingertip control in perfect harmony.

Tractors used on family farms must be powerful, flexible and adaptable. The compact AXOS 3 can negotiate narrow buildings and small yards with ease. Its agility and manoeuvrability really come into its own when you're working with the integrated CLAAS front loader. The E-PILOT S gives you precise fingertip control of the implement.



◀ Up to 120 hp engine output, front linkage and PTO: with a DISCO front and rear mower combination, the AXOS can mow over 6 metres of grass in a single pass.



E-PILOT S for fast, safe and efficient work, 90-litre hydraulic circuit and transparent sunroof. This combination is unique.

**Front loader and tractor work seamlessly together.**

A good connection between the front loader and the tractor is key to safe and rapid loader work. CLAAS front loaders with hydraulic or mechanical self-levelling linkage are a perfect fit. The mounting brackets are optimally integrated into the overall tractor design. The longitudinal supports extending right back to the rear axle provide the necessary stability for heavy work.

The FITLOCK system and the MACH quick-release couplers make it easy to fit and remove your CLAAS front loader. FASTLOCK locks the attachment and with MACH 2 you can connect the hydraulic couplings in a single action. The SHOCK ELIMINATOR effectively dampens vibrations during operation.

**3.2 t lift capacity at the front.**

Alternatively, instead of the front loader, you can use the fully integrated front linkage with a lift capacity of maximum 3.2 t. The short distance between the front axle and coupling points reduces the overhang with the front ballast or front mower and significantly improves front implement guidance.

**Powerful front PTO.**

The electrohydraulic front PTO runs at 1,000 rpm and opens up a wide range of potential applications.



# Ready to take on any challenge.

During a typical working day on a family farm, you often have to get in and out of the cab repeatedly to see to the animals or change implements. Safe and easy access to the cab is a must, so we have given the AXOS 3 wide, non-slip steps and large, front-hinged doors with a 180° opening angle. You can swing the steering column out of the way, just like you can with large CLAAS tractors. And you can easily adjust the tilt angle using the foot pedal.

The new AXOS 3 offers numerous advantages which make your day-to-day work more comfortable. Innovative design features and equipment significantly reduce operator fatigue.

 Wider, safer, more comfortable access to the cab.

**180° door-opening angle saves time.**

Have you ever wondered how many times you open and close the tractor door each day? It adds up to quite a few. The doors on the AXOS 3 open 180° to the front and latch into position. This is ideal for yard work, when you often have to get in and out. When latched open, the doors don't project beyond the contours of the AXOS 3, so the overall width of the tractor remains the same.

**Plenty of room for tall operators.**

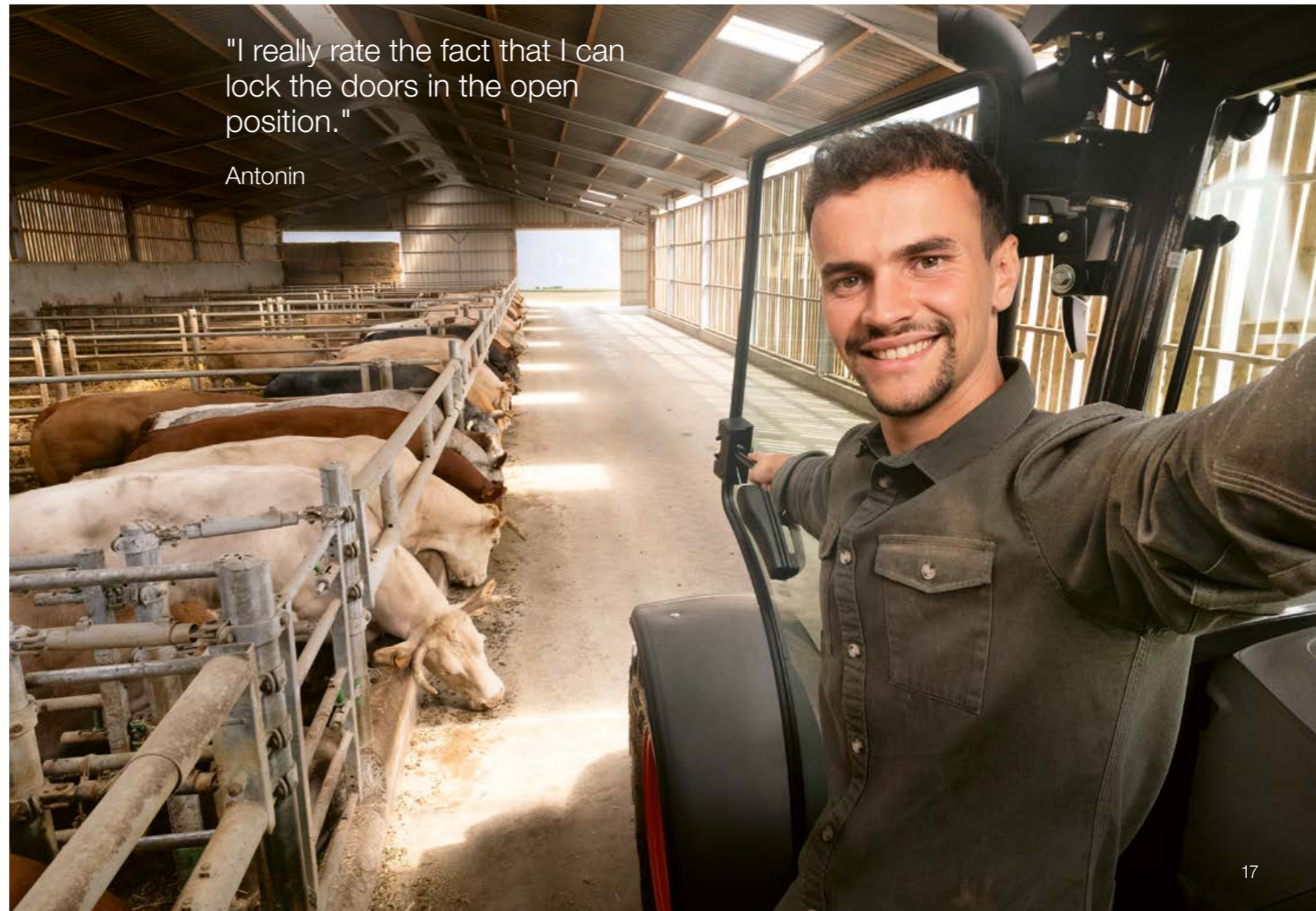
A comfortable cab despite compact dimensions? The CLAAS engineers have risen to the challenge. The spacious cab in the AXOS 3 means that you're always sitting comfortably at the wheel and can work efficiently. It has plenty of headroom so even tall operators will feel at ease.



▲ The doors can be latched open, allowing you to step in and out with ease. Another valuable time-saver.

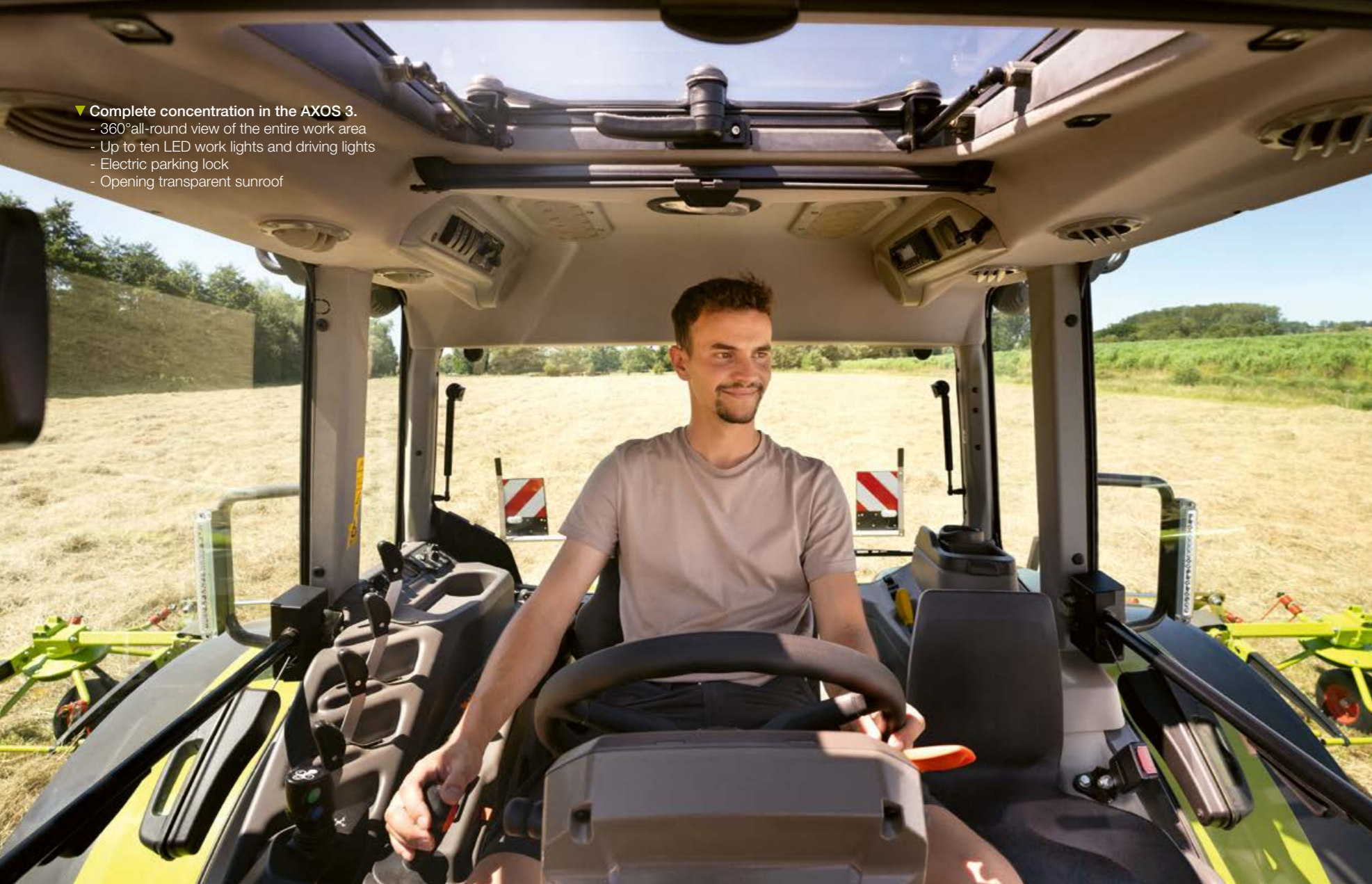


- ▼ You can do lots of things faster with the AXOS 3.
  - 180° door-opening angle for easy entry and exit
  - Doors latch securely in the open position



"I really rate the fact that I can lock the doors in the open position."

Antonin



- ▼ Complete concentration in the AXOS 3.
  - 360° all-round view of the entire work area
  - Up to ten LED work lights and driving lights
  - Electric parking lock
  - Opening transparent sunroof



▲ You always get a clear view of the front loader through the large transparent sunroof



▲ With ten LED work and driving lights, the AXOS 3 turns night into day.

## 360° all-round view for safety.

On the field, in the shed or in the yard – whatever you're doing, excellent visibility is key to safe manoeuvring. The cab's six slender pillars keep blind spots in the AXOS 3 to a minimum.

Furthermore, all components for the exhaust gas aftertreatment system are housed beneath the bonnet to avoid obstructing the view from the cab. The entire length of the bonnet on the AXOS 3 has a low profile that gives you a clear view of your front implements or the front loader and allows you to operate them safely.

### See more clearly through the transparent sunroof.

The operator has a clear view of the raised front loader through the opening transparent sunroof without having to twist round. This makes work easier, especially in confined or roofed areas.

In addition, the glass roof is FOPS-compliant (Falling Object Protective Structure). Safety features such as this ensure that the operator can focus fully on the job in hand.

### Bright as day with LED light.

With up to ten LED work and driving lights, the CLAAS AXOS 3 illuminates the surroundings perfectly; a particularly useful feature during the dark winter months. LED lighting on the AXOS 3 makes tasks such as feed rounds and fieldwork at dawn and dusk safer and more agreeable.

 LED lights optimally illuminate your work area.

The electric parking lock is very convenient if you need to get in and out of the cab frequently. It is activated via a lever on the steering wheel. With one simple operation you can put the gearbox in neutral, activate the parking lock and bring the tractor to a halt.



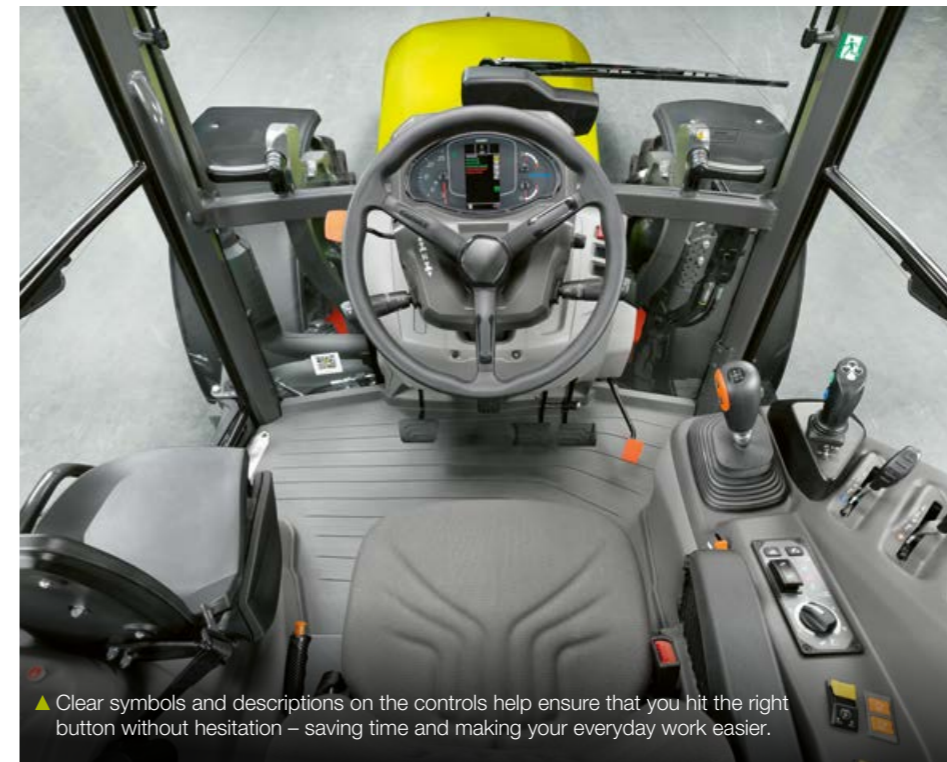
# Work doesn't have to be dull.



"We felt at home in the AXOS 3 right from the start."

Bernard and Aurelius

- ▲ Everything just where it should be.
  - Switch between different applications without making complicated adjustments
  - Ergonomic, self-explanatory control concept
  - All control elements clearly arranged and easy to identify



▲ Clear symbols and descriptions on the controls help ensure that you hit the right button without hesitation – saving time and making your everyday work easier.



▲ A control system that holds no mysteries makes the AXOS 3 the ideal all-rounder, all year round.

The AXOS 3 is impressively easy to use right from the word 'go'. All family members, from the experienced farmer to the new entrant, can get started straight away without giving it too much thought.

#### Ergonomic control concept.

The AXOS 3 provides a high level of comfort and convenience thanks to the intuitive, self-explanatory CLAAS control concept. Each control element is clearly labelled and within easy reach, making operator errors virtually impossible. Colour coding makes it easy to identify each function, which is a great advantage during hectic day-to-day operations. The side console is the result of extensive analysis of operating sequences in the cab. Frequently used functions are located at the front of the right-hand side console, while those that are used less frequently are positioned towards the back.

#### Clearly laid-out instrument panel.

The instrument panel is mounted on a fully adjustable steering column. It pivots with the column to give an unimpeded view of the controls at all times. The rev counter, fuel and urea gauge and temperature of the engine coolant are clearly displayed at all times. The 4.2" digital screen is in your direct field of view. And you'll have no trouble navigating the different menus.

#### Pleasant cab climate.

The air conditioning system distributes the air flow around the cab quietly and efficiently. Dust-free fresh air is drawn in on the left-hand side. The large filter has a long cleaning interval, and can be replaced with an activated carbon filter for crop spraying. Together with the particularly well-sealed cab and powerful ventilation system, this ensures that the operator is well-protected.

#### Clever detailing.

Many features of the AXOS 3 are designed to increase the operator's well-being and make their job easier. Such as the comfortable passenger seat, two USB ports within easy reach or the adjustable steering column with integrated instrument panel. Not to mention the spacious storage compartments and bottle holder.

Inexperienced or alternating drivers can also work productively with the tractor right from the start.



# Intuitive means productive.

No other tractor offers you such user-friendly features as the AXOS 3. It was designed and built to ensure that everyone immediately feels at home with the various functions and applications. The straightforward operator assistance systems are a particular highlight. They were specifically designed to reduce fatigue during long working days and maintain the driver's performance.

When you operate the AXOS 3, you can stay focussed for longer. The bottom line: more productivity throughout the entire day without adversely affecting the quality of work.

#### Stop without using the clutch pedal.

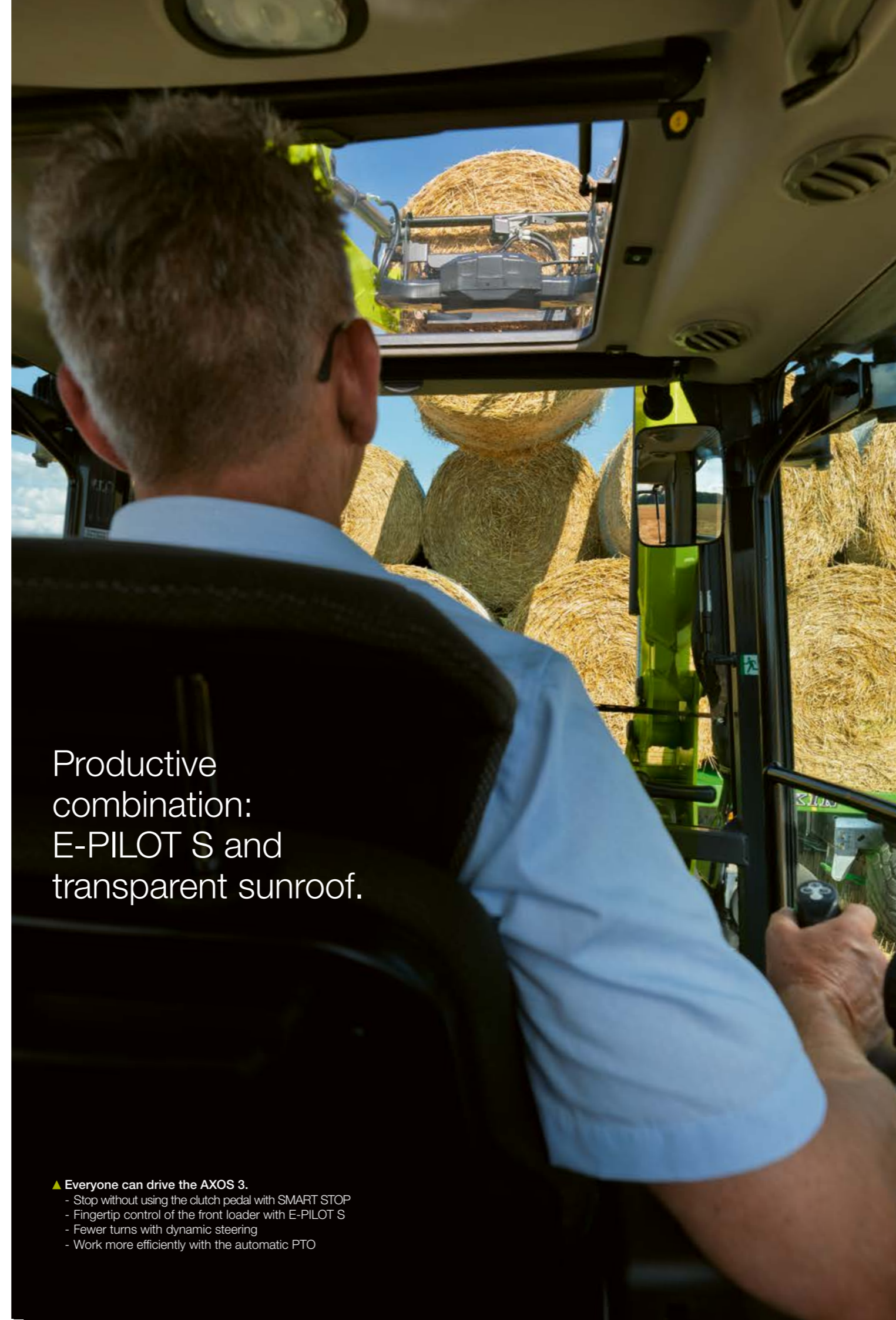
The SMART STOP operator assistance system is ideal for frequent stopping and starting, such as baling round bales or front loader work. With SMART STOP all you have to do is press the brake pedal, and the drive automatically disengages.

"The AXOS 3 is not just easy to operate. It also offers extra functions designed to simplify every day tasks."

Bernard



▲ Two engine speed memories for more precise fertiliser spreading and baling. Simply select the right speed at the press of a button.



## Productive combination: E-PILOT S and transparent sunroof.

#### ▲ Everyone can drive the AXOS 3.

- Stop without using the clutch pedal with SMART STOP
- Fingertip control of the front loader with E-PILOT S
- Fewer turns with dynamic steering
- Work more efficiently with the automatic PTO



#### Precise front loader control.

The electronic E-PILOT S front loader control system is easier to use and more precise than conventional Bowden cables. With it, you can operate the automatic bucket return or the hydraulic implement locking. It significantly reduces hand fatigue, making even long days harvesting hay and straw more enjoyable.

#### Dynamic steering.

Dynamic steering reduces the number of turns of the steering wheel by around half. This saves time and reduces physical strain, especially during front loader work or when performing repeated manoeuvres in confined spaces.

#### Convenient automatic PTO.

The automatic PTO greatly increases comfort and convenience when using PTO-driven implements. As soon as you actuate the rear linkage at the headland to raise or lower the implement, the PTO automatically disengages or engages. You can activate the automatic PTO using a button on the right-hand side console.

# Always ready for the next job.

The tractor is the mainstay of your farm. You use it every day, for seeing to the livestock, harvesting or other work. The AXOS 3 is the ideal partner because it enables you to get your work done efficiently, even under challenging conditions. Short downtimes for maintenance and longer intervals for changing lubricants also play their part. What's more, your reliable CLAAS service partner is always close at hand and – when it comes to the crunch – they can get to your farm without delay.

The 600-hour maintenance interval reduces downtimes. Another one hundred hours till maintenance is next due can make all the difference at harvest time.

### Extended maintenance intervals.

You only need to change the engine oil in the AXOS 3 once every 600 hours. The long interval is of particular benefit at harvest time when every hour counts. Gearbox oil needs changing every 1,200 hours, further reducing downtimes and maintenance costs.

### Rapid daily maintenance.

The robust, smooth 4-cylinder engine in the AXOS 3 has already proved its worth in many other CLAAS tractors such as the NEXOS and ELIOS. The engine compartment is identical to the one in these models. The one-piece bonnet gives easy access to all components in need of regular maintenance. Quick, daily servicing can be done without tools, helping to keep downtimes to a minimum.

### Worldwide supply of parts.

The use of tried and tested components means that parts are almost always available. The CLAAS Parts Logistics Center stocks 200,000 different parts ready to dispatch quickly all over the world.

### Direct line to CLAAS Service.

The AXOS 3 is reliably supported by an extensive network of CLAAS service partners and dealerships. If a part on the AXOS 3 needs replacing, downtimes are kept to a minimum to get your tractor back in action on your farm as soon as possible.

### MAXI CARE all-round protection for your machine.

MAXI CARE offers you a service agreement tailored to your needs, enabling you to plan and manage your maintenance costs more effectively. You also have the option of covering longer-term risks for added peace of mind.



"The compressed air lance is located within easy reach under the bonnet. I use it to clean out all the nooks and crannies."

Bernard



▲ Ready for action all year round. Thanks to tried and tested components, the AXOS 3 can be relied on even when the going gets tough.



▲ The compressed air connection supplied with the air brakes opens up new opportunities. You can adjust the tyre pressure in the field, for example.



CLAAS Service & Parts  
is there for you 24/7.  
[service.claas.com](http://service.claas.com)



### ▲ Always ready for the next job.

- Easy access for easy maintenance
- Extended maintenance intervals for fewer downtimes
- Reliable service and rapid parts availability
- MAXI CARE all-round protection for planning certainty

# Technical data.



▲ **TREND and COMFORT.**  
One tractor, two equipment options. Configure your ideal AXOS 3 in the CLAAS Configurator or get your dealer to advise you.



**Find the perfect AXOS 3 for your farm.**  
In the configurator you can choose between the entry-level AXOS 3 TREND or the higher specification AXOS 3 COMFORT.

Specify everything you need – front loader, front linkage, front PTO, number of spool valves or PTO speed – to tailor the machine perfectly to your day-to-day operations.

Configure your AXOS 3.  
[axos3.claas.com](http://axos3.claas.com)

▼ **Dimensions and weights**



CLAAS continually develops its products to meet customer requirements. This means that all products are subject to change without notice. All descriptions and specifications in this brochure should be considered approximate and may include optional equipment that is not part of the standard specifications. This brochure is designed for worldwide use. Please refer to your nearest CLAAS dealer and their price list for local specification details. Some protective panels may have been removed for photographic purposes in order to present the function clearly. To avoid any risk of danger, never remove these protective panels yourself. In this respect, please refer to the relevant instructions in the operator's manual. All technical specifications relating to engines are based on the European emission regulation standards: Stage. Any reference to the Tier standards in this document is intended solely for information purposes and ease of understanding. It does not imply approval for regions in which emissions are regulated by Tier.

AXOS	3.120	3.110	3.105	3.95
<b>Engine</b>				
Manufacturer	FPT	FPT	FPT	FPT
Number of cylinders	4	4	4	4
Cubic capacity	cm <sup>3</sup> 3600	3600	3600	3600
Emissions standard	Stage V	Stage V	Stage V	Stage V
Nominal engine speed	rpm 2300	2300	2300	2300
Engine speed at max. output	rpm 2000	2000	2000	2000
Output at nominal engine speed (ECE R 120) <sup>1</sup>	kW/hp 85/116	76/103	72/98	67/91
Max. output (ECE R 120) <sup>1</sup>	kW/hp 88/120	82/112	76/103	68/92
Engine speed at max. torque	rpm 1500	1500	1500	1500
Max. torque (ECE R 120) <sup>1</sup>	Nm 466	438	406	366
Max. fuel tank capacity	l 160	160	160	160
Max. urea tank capacity	l 10	10	10	10
HVO-compatible	●	●	●	●
Oil-change interval	h 600	600	600	600
<b>Transmission</b>				
6-speed transmission with 2 ranges, 12 F / 12 R and mechanical reverser	□	□	□	□
Min. speed at rated speed with 1600 mm diameter tyres	m/h 2200	2200	2200	2200
Engine speed at 40 km/h	rpm 1750	1750	1750	1750
6-speed transmission with 2 ranges and 2 TWINSHIFT powershift speeds, 24 F / 12 R and REVERSHIFT electronic reverser	□	□	□	□
Min. speed at rated speed with 1600 mm diameter tyres	m/h 1800	1800	1800	1800
Engine speed at 40 km/h	rpm 1750	1750	1750	1750
6-speed transmission with 3 ranges (incl. creep gear) and 2 TWINSHIFT powershift speeds, 36 F / 18 R and REVERSHIFT electronic reverser	□	□	□	□
Min. speed at rated speed with 1600 mm diameter tyres	m/h 300	300	300	300
Engine speed at 40 km/h	rpm 1750	1750	1750	1750
Oil-change interval	h 1200	1200	1200	1200
<b>Rear axle</b>				
Electrohydraulic differential lock (multi-disc clutch)	●	●	●	●
Max. rear wheel tyres (diameter)	mm 1600	1600	1600	1600
<b>Front axle</b>				
Max. steering angle	° 55	55	55	55
Optimum turning radius	m 4.40	4.40	4.40	4.40
Pivoting mudguards	○	○	○	○
<b>PTO</b>				
540 / 540 ECO	○	○	○	○
540 / 540 ECO / 1000	○	○	○	○
540 / 540 ECO / 1000 and ground speed PTO	○	○	○	○
Automatic PTO engagement / disengagement	○	○	○	○
<b>Hydraulics</b>				
Open-centre hydraulic circuit 60 l/min	●	●	●	●
Open-centre hydraulic circuit 90 l/min	○	○	○	○
Max. operating pressure	bar 190	190	190	190
Number of mechanical spool valves (min. / max.)	2-4	2-4	2-4	2-4
Number of mechanical spool valve with flow control (min. / max.)	1-2	1-2	1-2	1-2
Free-flow return	●	●	●	●
<b>Rear linkage</b>				
Max. lift capacity at ball ends	kg 5300	5300	5300	5300
Continuous lift capacity at 610 mm	kg 4000	4000	4000	4000
Electronic rear linkage control	●	●	●	●
<b>Front linkage</b>				
Max. lift capacity	kg 3240	3240	3240	3240
Front PTO 1000 rpm	○	○	○	○
<b>Dimensions and weights</b>				
Centre of rear axle to top of cab (a)	mm 1845	1845	1845	1845
Minimal overall height with 30" tyres (b)	mm 2500	2500	2500	2500
Wheelbase (c)	mm 2400	2400	2400	2400
Length (without front ballast, without front linkage) (d)	mm 4289	4289	4289	4289
Kerb weight depending on equipment (min. / max.)	kg 4400 / 4900	4400 / 4900	4400 / 4900	4400 / 4900
Permissible gross weight	kg 8000	8000	8000	8000

● standard ○ optional □ available

<sup>1</sup> Meets ISO TR 14396

# We want to make you the best in your field.

Everything we do is focused on you, our customers. We understand your daily challenges. Together with you, we develop agricultural technology that enables you to farm successfully and sustainably, now and in the future. Our digital solutions simplify complex processes and make your work so much more convenient.



CLAAS KGaA mbH  
Mühlenwinkel 1  
33428 Harsewinkel  
Deutschland  
Tel. +49 5247 12-0  
claas.com